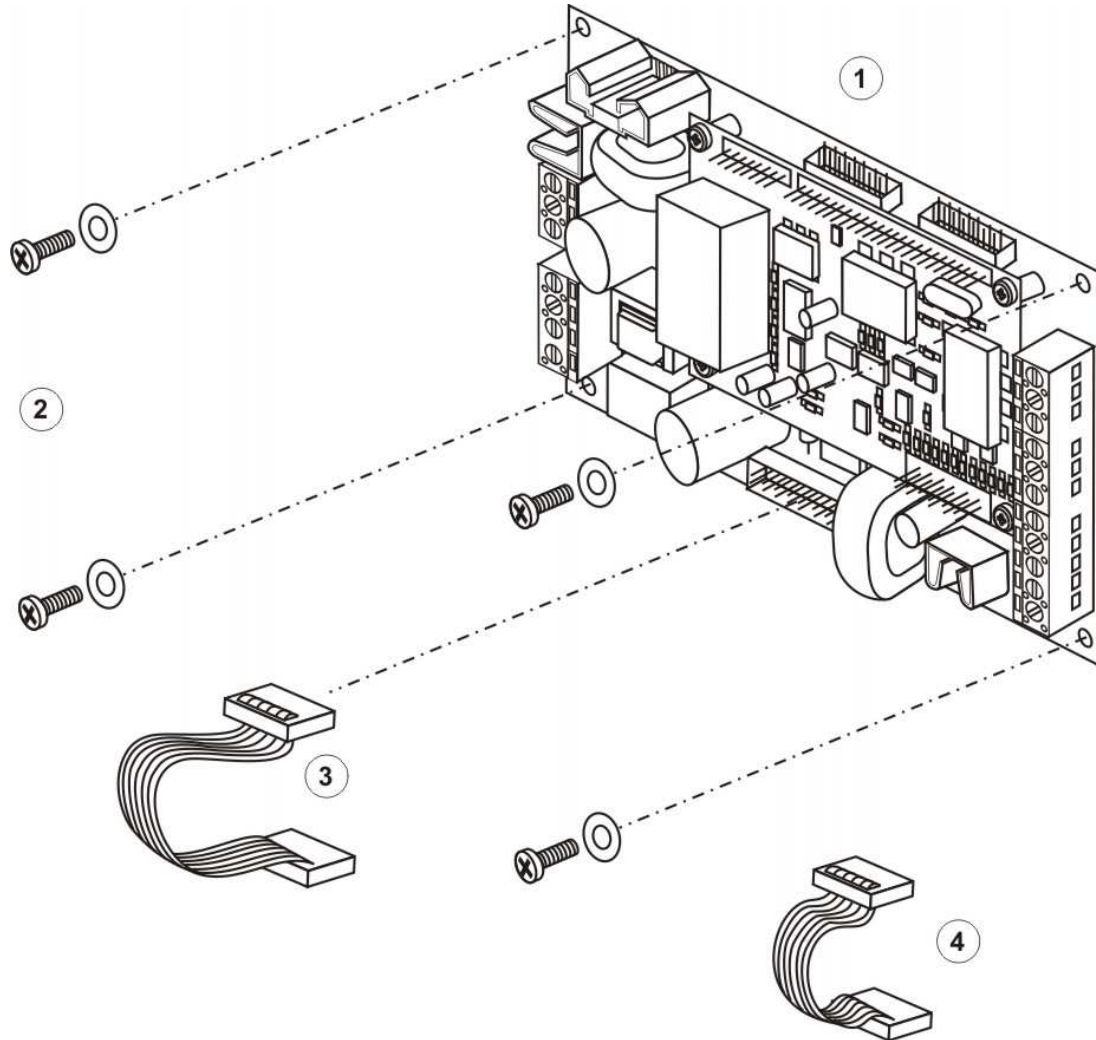


ACPAC – Wall Mount

Component Parts/Packing List

Satellite CPU/PSU Kit, Wall Mount Enclosure

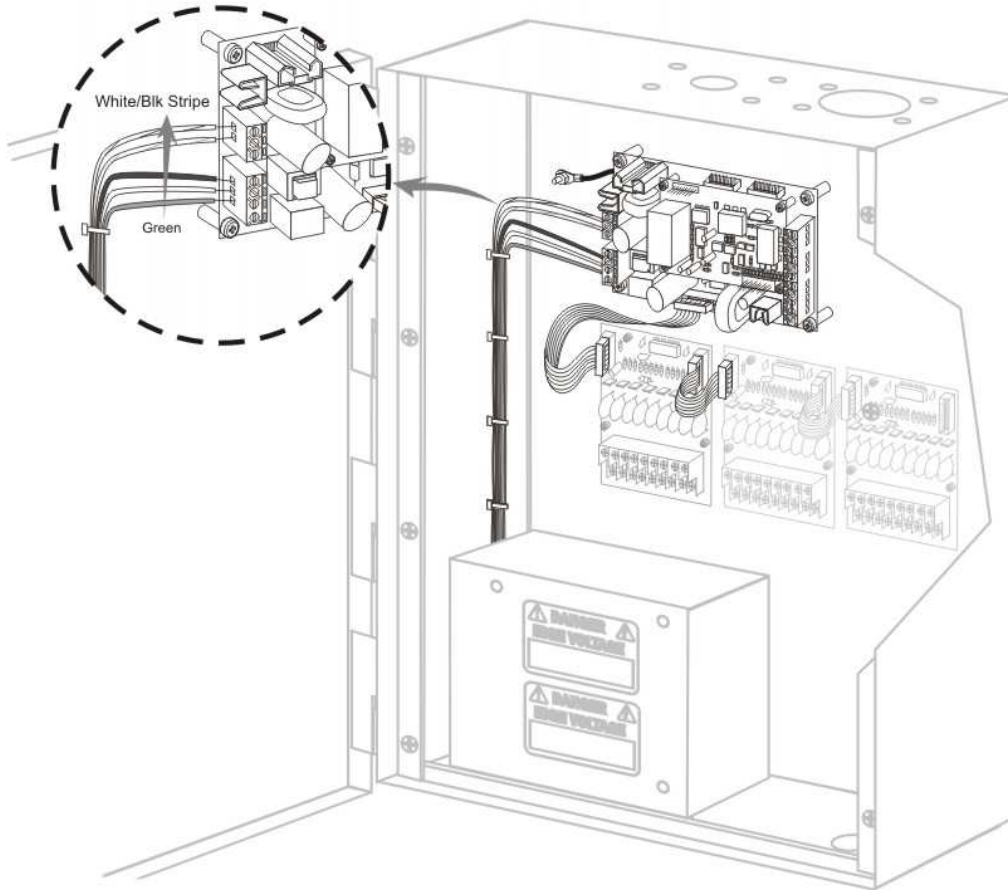


Ref.	Part No.	Description	Qty
	ACPACXXXX	Satellite CPU/PSU Kit, Wall Mount Enclosure	1
1	ACPACXXXX	Satellite CPU & PSU (G2-Assembled)	1
2		Screws and Washers	4
3		Cable, Valve Module Bus, 1.5 in (38.1 mm)	1
4		Cable, Valve Module Bus, 4 in (101.6 mm)	1

ACPAC – Wall Mount

Final Installation

Satellite CPU/PSU Kit, Wall Mount Enclosure



Final Install of Expansion Kit

1. Install on front of Wall Mount Enclosure Chassis: Mount ACPAC (1), on standoffs with four screws & washers (2).
2. Connect longer Cable Valve Module Bus (3) to lower Connector of the ACPAC. NOTE: Use the long cable (3) to connect the ACPAC with the First Valve Module, thereafter, use the smaller cable (4) to connect each Valve Module to the next Valve Module.
3. Insert Power Supply Wiring to side of the ACPAC connectors in the following order: (See detail)
 - White with black stripe
 - White with red stripe
 - Red
 - White
 - Green