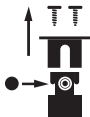


D55 SERIES Part Circle Golf Rotor

NOZZLE INSTALLATION GUIDE

STEP 1: REMOVE DRIVE ASSEMBLY

STEP 2: INSTALL NEW NOZZLE

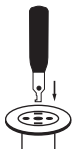


- Remove screws (2) on top of nozzle cap.
- Pull off nozzle cap.
- Snap in correct nozzle. (see Performance Chart).

- To remove nozzle, pull out using snap ring tool or screwdriver.



STEP 3: INSTALL DRIVE ASSEMBLY



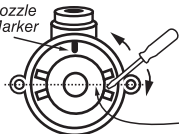
- Reinstall nozzle cap with screws (2).
- Install new snap ring under cap.
- Place assembly in body.
- Push assembly until flush.
- Using tool push down in snap ring slots (2) until click in.



ADJUSTABLE PART CIRCLE OPERATION

STEP A: ROTATE EASY ARC TABS TO DESIRED ARC

Nozzle
Marker



- Rotor must be OFF
- Remove EASY ARC Cap
- Using a small screwdriver or pointed object, move right and left tabs on each side of the Nozzle Marker.
Example: 180°
- Replace EASY ARC Cap



NOTE: Make sure nozzle faces area to be irrigated.

D55 SERIES Part Circle Golf Rotor

55-Series Performance Data (U.S.)

	#08 BLACK			#12 GRAY			#14 YELLOW			#16 ORANGE			#18 BROWN			#19 RED			#25 BLUE			#28 GREEN		
Base Pressure (psi)	Radius (ft)	Flow (gpm)		Radius (ft)	Flow (gpm)		Radius (ft)	Flow (gpm)		Radius (ft)	Flow (gpm)		Radius (ft)	Flow (gpm)		Radius (ft)	Flow (gpm)		Radius (ft)	Flow (gpm)		Radius (ft)	Flow (gpm)	
60	37	7.9		40	9.0		49	11.9		53	15.0		57	16.8		55	19.7		61	21.2		63	26.4	
70	37	10.1		40	12.0		47	14.5		51	16.3		55	18.3		55	21.1		59	24.4		65	26.2	
80	—	—		—	—		—	—		—	—		—	—		59	22.2		65	26.4		67	30.6	

55-Series Performance Data (Metric)

	#08 BLACK				#12 GRAY				#14 YELLOW				#16 ORANGE				#18 BROWN				#19 RED				#25 BLUE				#28 GREEN			
Base Pressure (bars)	Radius (m)	Flow (l/s)	Flow (m³/hr)		Radius (m)	Flow (l/s)	Flow (m³/hr)		Radius (m)	Flow (l/s)	Flow (m³/hr)		Radius (m)	Flow (l/s)	Flow (m³/hr)		Radius (m)	Flow (l/s)	Flow (m³/hr)		Radius (m)	Flow (l/s)	Flow (m³/hr)		Radius (m)	Flow (l/s)	Flow (m³/hr)		Radius (m)	Flow (l/s)	Flow (m³/hr)	
4,1	11.2	0.5	1.8		12.2	0.6	2.0		14.9	0.8	2.7		16.1	0.9	3.4		17.3	1.1	3.8		16.7	1.2	4.5		18.5	1.3	4.8		19.2	1.7	6.0	
4,8	11.2	0.6	2.3		12.2	0.8	2.7		14.3	0.9	3.3		15.5	1.0	3.7		16.7	1.2	4.2		16.7	1.3	4.8		17.9	1.5	5.5		19.8	1.7	6.0	
5,5	—	—	—		—	—	—		—	—	—		—	—	—		—	—	—		18.0	1.4	5.0		19.8	1.7	6.0		20.4	1.9	6.9	