

Signature®

EYES TO THE GROUND. MINDS TO THE HORIZON.



INTELLIGENT CONTROLLERS

2017-18 CATALOG



OVERVIEW

Signature Control Systems, Inc. can trace its roots in the irrigation industry to humble beginnings over 100 years ago. Since then, Signature® has been dedicated to providing the highest-quality products and services in the landscape and irrigation industry.

Signature® is an industry leader in the design and manufacture of turf management systems including intelligent irrigation controllers, site management software, irrigation valves, gear-drive rotors & spray-head products. Thus providing landscape managers, golf course superintendents, as well as property managers' direct control of their irrigation system, water and energy resources.

To achieve these goals Signature® continues to invest in research and development of new products, product line expansion and manufacturing facilities. We continue to increase our manufacturing capacity of our products in our own factory in the USA and are proud to bring to market a full basket of Professional Irrigation products servicing all industry segments and end users of irrigation products. Whether Installer, Designer, Distributor or End User you will find Signature® can meet and exceed your irrigation requirements.

In recent years, we have successfully staked a claim as an innovative creator of central control systems that range from the basic to the most complex. Today we have expanded controller ranges and with imminent water management legislation you will find Signature's own intellectual property is well positioned to meet and exceed this legislation. Further and when appropriate, we have and continue to invest in acquisitions that increase our product breadth and depth. As a result of several acquisitions, Signature® is now a full line manufacturer and supplier to the Irrigation Industry with products that will cover any installation requirement. We are sure that you will be familiar with many of the products you see listed in our catalog and invite you to look at them with the new understanding that Signature® will be supplying the Irrigation Industry for many years to come with innovative solutions.



Brian J. Smith
President and CEO

BACKGROUND

You may think that Signature® is a fairly new name in the irrigation industry... we are not. We can trace our roots in the irrigation industry to 1907 when we started out as the Thompson Manufacturing Co.

Through a series of strategic acquisitions and manufacturing expansion initiatives, Signature® provides a complete array of products and via our channel partners, distributes a complete line of irrigation equipment: battery operated controllers, residential and commercial controllers, golf satellite controllers, central control systems, gear drive rotors, spray head sprinklers, impact sprinklers, control valves, quick coupling valves and moisture sensors.

Signature® is known as a nimble company that can adapt to the changing economies of the world or regional market influences, and is a company driven by several guiding lights that keep us on track to achieve our most important goal—satisfying our customer.

To that end we are market driven, we listen to our customers and make sure any product or service we deliver meets their needs, not just ours.

Signature's designs are highly respected in the industry and with the emergence of our new design concepts and products, Signature® will certainly play a major role in the future of the irrigation industry.

MAJOR PRODUCT LINES:

Some of the names you may recognize:

Signature Share™

Web based irrigation controllers

Constellation® Galaxy™ & eConstellation®

Commercial irrigation satellite control systems

EZ Pro™

Wall Mount residential & commercial style controllers

Aurora® & eAurora®

Golf course irrigation satellite control systems

SoloRain®

Battery operated controllers "No Power ... No Problem"®,

The Aurora®, Constellation®, and Galaxy™ range of irrigation products are industry recognized as the latest technology in cost effective irrigation. In addition, Signature® has a comprehensive range of commercial and large turf rotors and valves. Signature® provides management systems in hardwire, radio and telephone configurations including weather station equipment. All Signature Control Systems' products are compatible for both domestic and international markets.

TABLE OF CONTENTS

WATER RESPONSIBLY	
With Signature® Intelligent Control Systems	4
ANYWHERE ACCESS	
With SIGNATURE SHARE™	4
ANATOMY OF A SIGNATURE SHARE™ SYSTEM	5
SHARE™ KEY FEATURES AND BENEFITS	6
SHARE™ PRODUCT PORTFOLIO	7
SHARE™ CONTROLLER COMPARISON CHART	8
SHARE™ INDOOR CONTROLLER	
Share™ 8210	9
Share™ 8240	10
Share™ 8250	11
Share™ 8260	12
SHARE™ OUTDOOR CONTROLLER	
Share™ 8310	13
Share™ 8340	14
Share™ 8360	15
Share™ 8700	16
Share™ 8700D Two-Wire Decoder	17
Share™ 8700VM Enclosure Mount Outdoor	18
Share™ 8800	19
GALAXY-RT™ SERIES	
Galaxy-RT™ Wall Mount Outdoor Controller	20-21
Galaxy-RT™ Pedestal Outdoor Controller	20-21
Signature iWAN™ Platform	22
Share™ 8900 Series	
SHARE™ ACCESSORIES	23
FLOW SENSOR	
PVC T-Mount Flow Sensor	24

WATER RESPONSIBLY WITH SIGNATURE® INTELLIGENT CONTROL SYSTEMS

As an industry leader in intelligent controllers, we understand that everyone's irrigation needs differ. And that's exactly why we design each of our products to deliver unmatched flexibility, ease-of-use, and power. Whether watering golf courses or commercial or residential properties, you will have access to the same revolutionary, water-saving technology; technology that aims to give you seamless control over your irrigation systems.

This unprecedented control is best illustrated with our SIGNATURE **SHARE**™ platform — a cloud-based operating system that provides the ability to remotely access any of our web-based controllers from anywhere in the world via smartphone (iOS® or Android™) or other Internet-enabled devices. Additionally, our EPA WaterSense® approved, Intelligent Watering Software helps fine-tune your system by precisely irrigating each microclimate, programming all agronomical attributes of the irrigated landscape, and transmitting ET data to the controller daily.

Everything we do — all our products, software, and services — revolve around saving you water, time, and money.

ANYWHERE ACCESS WITH SIGNATURE SHARE™ COMMUNICATION PLATFORM

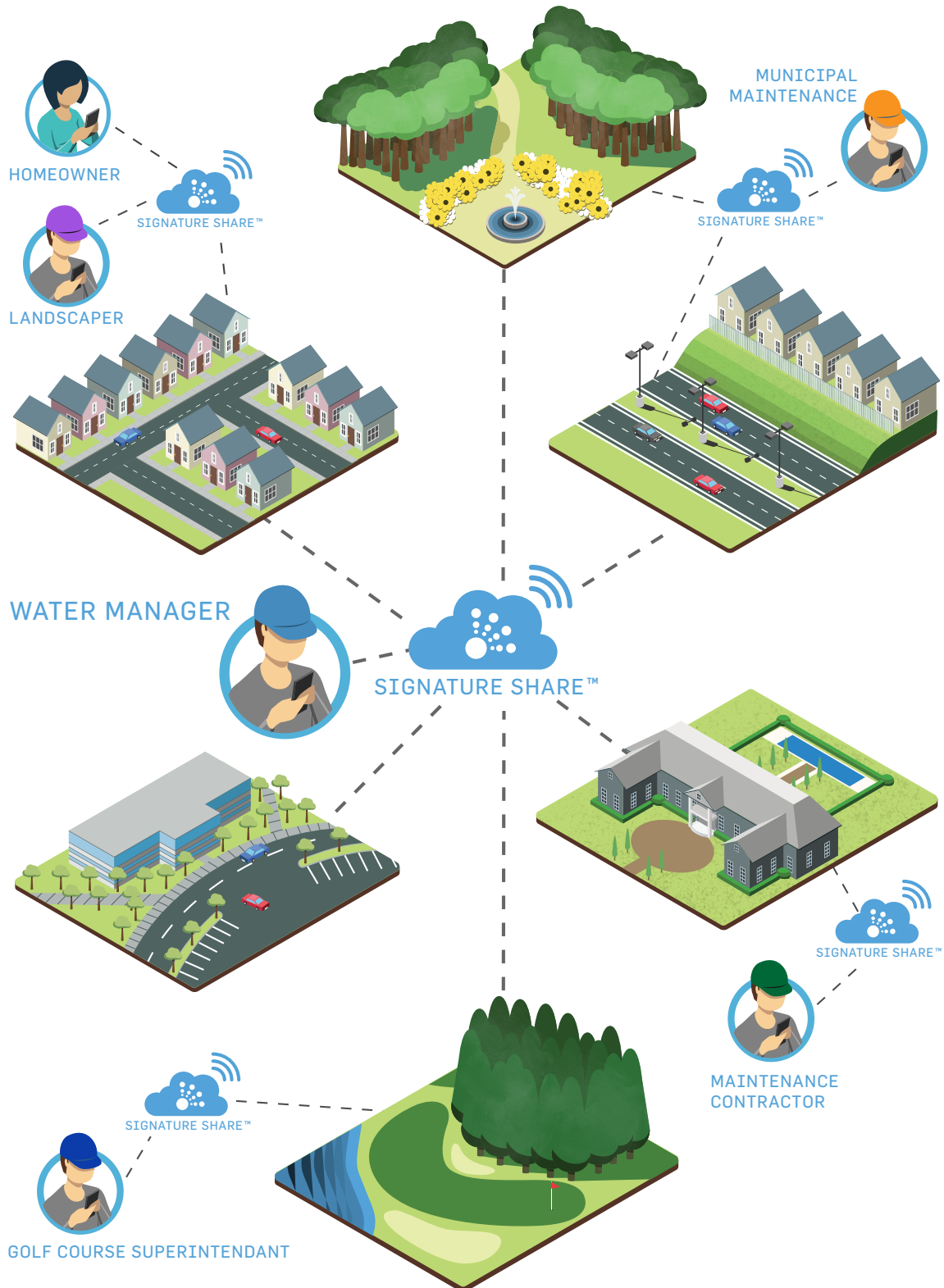
Apps have altered the way in which we communicate. In fact, they have fundamentally changed the way we do business. From basic communication to automation, speed, efficiency, and simplicity have become the core drivers — three qualities we wanted to bring to the irrigation industry. As a result, we created the SIGNATURE **SHARE**™ app. Whether you install one or a thousand controllers, this simple application lets you manage them all from anywhere in the world via your smartphone (iOS or Android) or any other Internet-enabled device.

Specifically, the SIGNATURE **SHARE**™ app provides you with a homepage that can contain all of the controllers you have registered. With the app, your smartphone, tablet or computer take the place of the dials, buttons, and screens you're used to, and give you complete access to each controller.

But the key differentiator that separates SIGNATURE **SHARE**™ from the competition is its multi-level hierarchy with username and password-protected access. Through this, a contractor can monitor or control every system they have installed directly from a smartphone with a single username and password, while the homeowner only has access to their own system.

So, whether you install residential controllers or commercial control systems, SIGNATURE **SHARE**™ lets you monitor it all.

ANATOMY OF A SHARE™ CONTROL SYSTEM



KEY FEATURES/BENEFITS

- **Remote Control:** Remote access to the controller via a mobile app allows contractors to operate and program the controller from virtually anywhere without the need of property owners to be present
- **Total System Control:** Total irrigation system control from anywhere allows managers to perform site-wide commands, conduct remote diagnostics, and carry out a host of additional functions from any internet connected computer, eliminating the need to travel to each controller, saving you time and money
- **Weather-Based Irrigation:** Employs the industry's most advanced algorithm and software system to reduce water use by adjusting watering schedules automatically. Saves up to 40% or more water while keeping plants healthy and green (intelligent models only) giving owners a fast payback period. Employs real time ET data calculated wirelessly by using nearby weather stations eliminating the need and cost of installing and maintaining a dedicated weather sensor
- **Web-Enabled:** "Pre Internet Connected Programming" allows contractors to program the controller prior to installation, increasing productivity. "Sensor Sharing," links any controller to sensor inputs from any sensor connected to any Share™ controller site wide, eliminating the need to purchase and install multiple sensors. Future software upgrades are automatically downloaded into the controller, extending the life of and improving the capabilities and benefits of the controller over time
- **Global Rain Delay:** Temporarily pause the operation of a single controller, an entire site, or a group of sites by using the mobile app or online account. Eliminates the need to adjust controllers at each site
- **Site-Wide Event Triggers:** Enables landscape managers to program an action for any controller based on an event or condition at any other controller
- **Automatic Alarms, Alerts and Notifications:** Makes landscape managers aware of problems as they arise allowing them to resolve issues immediately before they become a problem
- **Flow Monitoring:** Automatically detects "over flows" then shuts down the system and alerts managers, saving water and preventing damage due to erosion (flow sensor required)
- **Custom Reporting:** Generate "Flow" and other reports to communicate system performance
- **Uniform Programming:** All Share™ models makes it easy to mix and match additional controllers on the same site
- **"Basic" and "Intelligent" Programs Available:** Allows users to run traditional programs and ET-based programs on the same controller (a basic program for planters under a patio cover for example)
- **EPA's WaterSense Designation:** Qualifies for rebates with many water districts
- **Password Protected:** software protects against hackers and unwanted controller access
- **Perpetual Backup/No Battery Needed:** Programs reside in the controller and in "the cloud" meaning you'll never lose a program, time or date setting again
- **Multi Level User Access:** Grant or restrict access to the controller, giving you complete control over who can operate the controller and at what level
- **Manual Start:** Button on the controller allows contractors to run each station manually from the controller without the use of Signature's mobile app

SHARE™ CONTROLLER PRODUCT PORTFOLIO

SHARE™ 8200 Series

Indoor, 4 to 12 Station, Choice of Ethernet Connection, Integrated Cellular or WiFi Modem, Web-Based Intelligent Irrigation Controller for Residential Applications

Models

- 8210 - Integrated Wi-Fi Modem(App only)
- 8240 - Integrated Wi-Fi Modem
- 8250 - Ethernet Connection
- 8255 - Integrated Cellular Modem (12 Volt DC Output)
- 8260 - Integrated Cellular Modem



SHARE™ 8300 Series

Outdoor, 4 to 12 Station, Choice of Integrated Cellular or Wi-Fi Modem, Web-Based Intelligent Irrigation Controller for Residential Applications

Models

- 8310 - Integrated Wi-Fi Modem(App only)
- 8340 - Integrated Wi-Fi Modem
- 8360 - Integrated Cellular Modem



SHARE™ 8700/8800 Series

Outdoor, 8 to 24 Stations or 50 to 125 Stations with 2-Wire Decoders, Integrated Cellular Modem, Web-Based Intelligent Irrigation Controller for Residential and Commercial Applications

Models

- 8700 - 8 or 12 Stations
- 8755 - 12 Stations with 12 Volt DC Output
- 8700D - 50 to 125 Stations (2-Wire Decoder)
- 8800 - 16, 20 or 24 Stations



SHARE™ Galaxy RT Series

Outdoor, 8 to 96 Station (1 to 250 Stations with 2-Wire Decoders, Cellular Enabled, Web-Based, Intelligent Irrigation Controller for Commercial and Municipal Applications

Models

- GALSLWY - Galaxy RT Wall Mount
- GALSLWY - Galaxy RT Pedestal



SCS SHARE™ CONTROLLER COMPARISON

	8210	8240	8250	8260	8310	8340	8360	8700	8700D	8800
PRIMARY APPLICATION										
Residential	✓	✓	✓	✓	✓	✓	✓	✓	✓	✓
Light Commercial				✓	✓	✓	✓	✓	✓	✓
Commercial / Industrial				✓		✓	✓	✓	✓	✓
CONNECTION OPTIONS										
Ethernet Port			✓							
Integrated Wi-Fi	✓	✓		✓	✓	✓	✓	✓	✓	✓
Cellular				✓			✓	✓	✓	✓
iWAN Platform				✓			✓	✓		✓
FEATURES										
Enclosure	Indoor	Indoor	Indoor	Indoor	Outdoor	Outdoor	Outdoor	Outdoor	Outdoor	Outdoor
App Communication	✓	✓	✓	✓	✓	✓	✓	✓	✓	✓
Desktop Communication		✓	✓	✓		✓	✓	✓	✓	✓
Multiple Users	✓	✓	✓	✓	✓	✓	✓	✓	✓	✓
Multiple Sites		✓	✓	✓		✓	✓	✓	✓	✓
Station Count (Up To)	12	12	12	12	12	12	12	12	125	24
Power Input	110/230	110/230	110/230	110/230	110/230	110/230	110/230	110/230	110/230	110/230
Power Output	24VAC, 0.5A	24VAC, 0.5A	24VAC, 0.5A	24VAC, 0.5A	24VAC, 1A	24VAC, 1A	24VAC, 1A	24VAC, 1A	24VAC, 3A	24VAC, 1A
Solar Power Option										
Decoder Control									✓	
Flow Sensing	✓	✓	✓	✓		✓	✓	✓	✓	✓
Integrated Sensor Ports	1	1	1	1	2	2	2	2	2	1
Smart Sensor Network Module		✓	✓							
Smart Sensor Network Module [Integrated]									✓	✓
Master Valve / Pump Starts	1	1	1	1	1	1	1	1	1	1
Programs (Up to)	8	20	20	16	8	16	16	16	16	16
Station Timing (Up To)	18 hr	18 hr	13 hr	18 hr	18 hr	18 hr	18 hr	18 hr	18 hr	18 hr
Events Per Program	64	24	24	64	64	64	64	64	64	64
Starts Per Program (Up To)	4	4	4	4	4	4	4	4	4	4
Manual On /Off	✓	✓	✓	✓	✓	✓	✓	✓	✓	✓
Diagnostics	✓	✓	✓	✓	✓	✓	✓	✓	✓	✓
Surge Protection	✓	✓	✓	✓	✓	✓	✓	✓	✓	✓
SCHEDULING OPTIONS										
Odd/Even	✓	✓	✓	✓	✓	✓	✓	✓	✓	✓
Interval (Days)	1-99	1-99	1-99	1-99	1-99	1-99	1-99	1-99	1-99	1-99
12 Month Calendar	✓	✓	✓	✓	✓	✓	✓	✓	✓	✓
Weekday	4 wks	4 wks	4 wks	4 wks	4 wks	4 wks	4 wks	4 wks	4 wks	4 wks
Water Budgeting/ Month	0 to 999%	0 to 999%	0 to 999%	0 to 999%	0 to 999%	0 to 999%	0 to 999%	0 to 999%	0 to 999%	0 to 999%
Stacking Start Times	✓	✓	✓	✓	✓	✓	✓	✓	✓	✓
Rain Delay	✓	✓	✓	✓	✓	✓	✓	✓	✓	✓
Delay Between Stations (Up To)	18 hr	18 hr	12 hr	18 hr	18 hr	18 hr	18 hr	18 hr	18 hr	18 hr
Simultaneous Multi-Station Operation	1	1	1	2	1	1	1	2	15	2
Cycle & Soak	✓	✓	✓	✓	✓	✓	✓	✓	✓	✓
Overlapping Programs	✓	✓	✓	✓	✓	✓	✓	✓	✓	✓

SHARE[™] 8210

Residential

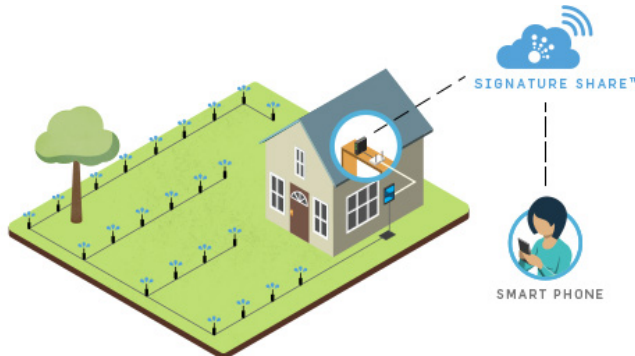
Indoor, 4 to 12 Station, Integrated Wi-Fi Modem, IOS[®] or Android[™] App-Based Intelligent Irrigation Controller.

FEATURES

- Model Type: Indoor
- Enclosure Type: Plastic, Wall Mount
- Programming Type: Intelligent
- Number of Stations: 4, 6, 8, 12
- Number of Programs: 8
- Programmable Events: 64
- Number of Start Times: 4
- Master Valve Pump Starts: 1
- Run Times: 1 Min to 17 Hrs 59 Min
- Integrated Sensor Terminals: 2
- Flexible Scheduling Options:
 - Day(s) of Week
 - Day(s) of Month
 - Day(s) of Year
 - Day(s) to Skip (1-99 Days)
 - Odd/Even
- Qualifies for Water Conservation Rebates
 - EPA WaterSense Approved (Intelligent models only)

COMMUNICATION

- Integrated Wi-Fi Modem
 - IEEE 802.11 b/g/n Compatible



HOW TO ORDER

8210-12-I10-USA				
Model	Stations	Program Type	Communication Type	Country Code
8210	04 06 08 12	I = Intelligent	10 = Integrated Wi-Fi Modem	USA = United States ISO*

*International models - Enter ISO Country Code
ie. Spain = ESP, France = FRA, etc.

ELECTRICAL SPECIFICATIONS

Power Input (Plug in Transformer)

USA & Canada: 120VAC, 60Hz

International: 230VAC, 50Hz

Station Output

All Models: 24VAC, 0.83 Amp

Max Load Per Station

All Models: 0.83 Amp

DIMENSIONS (H X W X D)

Cabinet

7" (17,8 cm) x 5 5/8" (14,3 cm) x 2" (5,1 cm)

Enclosure Material: Plastic

Enclosure Type: Indoor

CERTIFICATIONS

Industry/Testing: UL, cUL, CE, CSA, C-tick, FCC Part 15



SHARE™ 8240

Indoor, 4 to 12 Station, Integrated Wi-Fi Modem, Web-Based Intelligent Irrigation Controller

Residential

FEATURES

- Model Type: Indoor
- Enclosure Type: Plastic, Wall Mount
- Programming Type: Basic or Intelligent
- Number of Stations: 4, 6, 8, 10, 12
- Number of Programs: 16
- Programmable Events: 64
- Number of Start Times: 4
- Master Valve Pump Starts: 1
- Run Times: 1 Min to 17 Hrs 59 Min
- Integrated Sensor Terminals: 1
- Flexible Scheduling Options:
 - Day(s) of Week
 - Day(s) of Month
 - Day(s) of Year
 - Day(s) to Skip (1-99 Days)
 - Odd/Even
- Qualifies for Water Conservation Rebates
 - EPA WaterSense Approved (Intelligent models only)

COMMUNICATION

- Integrated Wi-Fi Modem
- IEEE 802.11 b/g/n Compatible



HOW TO ORDER

8240 -12-I10-USA				
Model	Stations	Program Type	Communication Type	Country Code
8240	04	B = Basic	10 = Integrated Wi-Fi Modem	USA = United States
	06	I = Intelligent		ISO*
	08			
	10			
	12			

*International models - Enter ISO Country Code ie. Spain = ESP, France = FRA, etc.

ELECTRICAL SPECIFICATIONS

Power Input (Plug in Transformer)

USA & Canada: 120VAC, 60Hz

International: 230VAC, 50Hz

Station Output

All Models: 24VAC, 0.83 Amp

Max Load Per Station

All Models: 0.83 Amp

Station Capacity

All Models: One 24VAC, 6VA Solenoid

Valve per Station Plus a Master Valve

DIMENSIONS (H X W X D)

Cabinet

7" (17,8 cm) x 5 5/8" (14,3 cm) x 2" (5,1 cm)

Enclosure Material: Plastic

Enclosure Type: Indoor

CERTIFICATIONS

Industry/Testing: UL, cUL, CE, CSA, C-tick, FCC Part 15



SHARE™ 8250

Indoor, 4 to 12 Station, Integrated Ethernet Port, Web-Based Intelligent Irrigation Controller

Residential

FEATURES

- Model Type: Indoor
- Enclosure Type: Plastic, Wall Mount
- Programming Type: Basic or Intelligent
- Number of Stations: 4, 6, 8, 10, 12
- Number of Programs: 16
- Programmable Events: 64
- Number of Start Times: 4
- Master Valve Pump Starts: 1
- Run Times: 1 Min to 17 Hrs 59 Min
- Integrated Sensor Terminals: 1
- Flexible Scheduling Options:
 - Day(s) of Week
 - Day(s) of Month
 - Day(s) of Year
 - Day(s) to Skip (1-99 Days)
 - Odd/Even
- Qualifies for Water Conservation Rebates
 - EPA WaterSense Approved (Intelligent models only)

COMMUNICATION

- Integrated Ethernet Port: 10MB, RJ-45 Connector



POWERLINE ADAPTER
(Ethernet Over Power)



WI-FI BRIDGE



Ethernet Cable

HOW TO ORDER

8250-12-12-USA				
Model	Stations	Program Type	Communication Type	Country Code
8250	04	B = Basic	2 = Integrated Ethernet	USA = United States
	06	I = Intelligent	8 = Powerline Adapter	ISO*
	08		9 = Wi-Fi Bridge	
	10			
	12			

*International models - Enter ISO country code
ie. Spain = ESP, France = FRA, etc.

ELECTRICAL SPECIFICATIONS

Power Input

USA & Canada: 120VAC, 60Hz
International: 230VAC, 50Hz

Station Output

All Models: 24VAC, 0.83 Amp

Max Load Per Station

All Models: 0.83 Amp

Station Capacity

All Models: One 24VAC, 6VA Solenoid Valve per Station Plus a Master Valve

DIMENSIONS (H X W X D)

Cabinet:

7" (17,8 cm) x 5 5/8" (14,3 cm) x 2" (5,1 cm)

Enclosure Material: Plastic

Enclosure Type: Indoor

CERTIFICATIONS

Industry/Testing: UL, cUL, CE, CSA, C-tick, FCC Part 15



SHARE™ 8260

Indoor, 4 to 12 Station, Choice of Integrated Cellular or Wi-Fi Modem, Web-Based Intelligent Irrigation Controller

Residential

FEATURES

- Model Type: Indoor
- Enclosure Type: Plastic, Wall Mount
- Programming Type: Basic or Intelligent
- Number of Stations: 4, 6, 8, 10, 12
- Number of Programs: 16
- Programmable Events: 64
- Number of Start Times: 4
- Master Valve Pump Starts: 1
- Run Times: 1 Min to 17 Hrs 59 Min
- Integrated Sensor Terminals: 1
- Flexible Scheduling Options:
 - Day(s) of Week
 - Day(s) of Month
 - Day(s) of Year
 - Day(s) to Skip (1-99 Days)
 - Odd/Even
- Qualifies for Water Conservation Rebates
 - EPA WaterSense Approved (Intelligent models only)

COMMUNICATION

- Integrated Cellular Modem
 - GSM Radio
 - CDMA Radio
- Integrated Wi-Fi Modem
- Optional Remote Communication with RF (iWAN)



HOW TO ORDER

8260-12-14-USA				
Model	Stations	Program Type	Communication Type	Country Code
8260	04	B = Basic	4 = GSM Radio Only	USA = United States
	06	I = Intelligent	5 = CDMA Radio Only	ISO*
	08		6 = GSM Radio + RF (iWAN)	
	10		7 = CDMA + RF (iWAN)	
	12		10 = Wi-Fi Modem Only	*International models - Enter ISO country code
			12 = Wi-Fi + RF (iWAN)	ie. Spain = ESP, France = FRA, etc.

ELECTRICAL SPECIFICATIONS

Power Input

USA & Canada: 120VAC, 60Hz

International: 230VAC, 50Hz

Station Output

All Models: 24VAC, 0.83 Amp

Max Load Per Station

All Models: 0.83 Amp

Station Capacity

All Models: One 24VAC, 6VA Solenoid Valve per Station Plus a Master Valve

DIMENSIONS (H X W X D)

Cabinet:

7" (17,8 cm) x 5 5/8" (14,3 cm) x 2" (5,1 cm)

Enclosure Material: Plastic

Enclosure Type: Indoor

CERTIFICATIONS

Industry/Testing: UL, cUL, CE, CSA, C-tick, FCC Part 15



Residential/ Light Commercial

SHARE™ 8310

Outdoor, 4 to 12 Station, Integrated Wi-Fi Modem, IOS® or Android™ App-Based Intelligent Irrigation Controller.

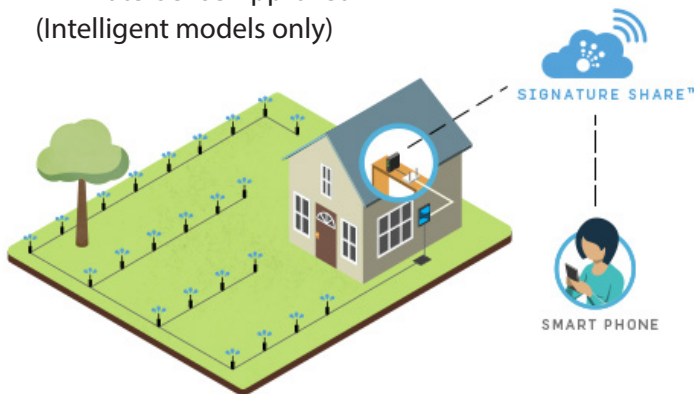
FEATURES

- Model Type: Outdoor
- Enclosure Type: Plastic, Wall Mount
- Programming Type: Basic or Intelligent
- Number of Stations: 4, 6, 8, 12
- Number of Programs: 8
- Programmable Events: 64
- Number of Start Times: 4
- Master Valve Pump Starts: 1
- Run Times: 1 Min to 17 Hrs 59 Min
- Integrated Sensor Terminals: 2
- Qualifies for Water Conservation Rebates
 - EPA WaterSense Approved (Intelligent models only)

- Flexible Scheduling Options:
 - Day(s) of Week
 - Day(s) of Month
 - Day(s) of Year
 - Day(s) to Skip (1-99 Days)
 - Odd/Even

COMMUNICATION

- Integrated Wi-Fi
 - IEEE 802.11 b/g/n compatible



HOW TO ORDER

8310 -12-I10-USA				
Model	Stations	Program Type	Communication Type	Country Code
8310	04	I = Intelligent	10 = Integrated	USA = United States
	06		Wi-Fi Modem	ISO*
	08			*International models - Enter ISO country code
	12			ie. Spain = ESP, France = FRA, etc.

ELECTRICAL SPECIFICATIONS

Power Input

USA & Canada: 120VAC, 60Hz

International: 230VAC, 50Hz

Station Output

All Models: 24VAC, 0.83 Amp

Max Load Per Station

All Models: 0.83 Amp

DIMENSIONS (H X W X D)

Weather Resistant Cabinet

9" (22.9 cm) x 12" (30.5 cm) x 5" (12.5 cm)

Enclosure Material: Plastic

Enclosure Type: Outdoor

CERTIFICATIONS

Industry/Testing: UL, cUL, CE, CSA, C-tick, FCC Part 15



SHARE™ 8340

Outdoor, 4 to 12 Station, Integrated Wi-Fi Modem, Web-Based Intelligent Irrigation Controller

Residential/ Light Commercial

FEATURES

- Model Type: Outdoor
- Enclosure Type: Plastic, Wall Mount
- Programming Type: Basic or Intelligent
- Number of Stations: 4, 6, 8, 10, 12
- Number of Programs: 16
- Programmable Events: 64
- Number of Start Times: 4
- Master Valve Pump Starts: 1
- Run Times: 1 Min to 17 Hrs 59 Min
- Integrated Sensor Terminals: 1
- Flexible Scheduling Options:
 - Day(s) of Week
 - Day(s) of Month
 - Day(s) of Year
 - Day(s) to Skip (1-99 Days)
 - Odd/Even

- Qualifies for Water Conservation Rebates
 - EPA WaterSense Approved (Intelligent models only)

COMMUNICATION

- Integrated Wi-Fi
 - IEEE 802.11 b/g/n compatible



HOW TO ORDER

8340-12-I10-USA				
Model	Stations	Program Type	Communication Type	Country Code
8340	04	B = Basic	10 = Integrated	USA = United States
	06	I = Intelligent	Wi-Fi Modem	ISO*
	08			
	10			
	12			

*International models - Enter ISO country code ie. Spain = ESP, France = FRA, etc.

ELECTRICAL SPECIFICATIONS

Power Input

USA & Canada: 120VAC, 60Hz
International: 230VAC, 50Hz

Station Output

All Models: 24VAC, 0.83 Amp

Max Load Per Station

All Models: 0.83 Amp

Station Capacity:

All Models: One 24VAC, 6VA Solenoid Valve per Station Plus a Master Valve

DIMENSIONS (H X W X D)

Weather Resistant Cabinet

9" (22.9 cm) x 12" (30.5 cm) x 5" (12.5 cm)

Enclosure Material: Plastic

Enclosure Type: Outdoor

CERTIFICATIONS

Industry/Testing: UL, cUL, CE, CSA, C-tick, FCC Part 15



Residential/ Light Commercial

SHARE™ 8360

Outdoor, 4 to 12 Station, Choice of Integrated Cellular or Wi-Fi Modem, Web-Based Intelligent Irrigation Controller

FEATURES

- Model Type: Outdoor
- Enclosure Type: Plastic, Wall Mount
- Programming Type: Basic or Intelligent
- Number of Stations: 4, 6, 8, 10, 12
- Number of Programs: 16
- Programmable Events: 64
- Number of Start Times: 4
- Master Valve Pump Starts: 1
- Run Times: 1 Min to 17 Hrs 59 Min
- Integrated Sensor Terminals: 1
- Flexible Scheduling Options:
 - Day(s) of Week
 - Day(s) of Month
 - Day(s) of Year
 - Day(s) to Skip (1-99 Days)
 - Odd/Even

- Qualifies for Water Conservation Rebates
- EPA WaterSense Approved (Intelligent models only)

COMMUNICATION

- Integrated Cellular Modem
 - GSM Radio
 - CDMA Radio
- Integrated Wi-Fi Modem
- Optional Remote Communication with RF (iWAN)



HOW TO ORDER

8360 -12-110-USA				
Model	Stations	Program Type	Communication Type	Country Code
8360	04	B = Basic	4 = GSM Radio Only	USA = United States
	06	I = Intelligent	5 = CDMA Radio Only	ISO*
	08		6 = GSM Radio + RF (iWAN)	
	10		7 = CDMA + RF (iWAN)	
	12		10 = Wi-Fi Modem Only	*International models - Enter ISO country code
			12 = Wi-Fi + RF (iWAN)	ie. Spain = ESP, France = FRA, etc.

ELECTRICAL SPECIFICATIONS

Power Input

USA & Canada: 120VAC, 60Hz

International: 230VAC, 50Hz

Station Output

All Models: 24VAC, 0.83 Amp

Max Load Per Station

All Models: 0.83 Amp

Station Capacity

All Models: One 24VAC, 6VA Solenoid Valve per Station Plus a Master Valve

DIMENSIONS (H X W X D)

Weather Resistant Cabinet:

9" (22.9 cm) x 12" (30.5 cm) x 5" (12.5 cm)

Enclosure Material: Plastic

Enclosure Type: Outdoor

CERTIFICATIONS

Industry/Testing: UL, cUL, CE, CSA, C-tick, FCC Part 15



Residential/ Light Commercial

SHARE™ 8700

Outdoor, 8 or 12 Station, Integrated Cellular Modem, Web-Based Intelligent Irrigation Controller

FEATURES

- Model Type: Outdoor
- Enclosure Type: Plastic, Wall Mount
- Programming Type: Basic or Intelligent
- Number of Stations: 8, 12
- Number of Programs: 16
- Programmable Events: 64
- Number of Start Times: 4
- Master Valve Pump Starts: 1
- Run Times: 1 Min to 17 Hrs 59 Min
- Integrated Sensor Terminals: 2
- Flexible Scheduling Options:
 - Day(s) of Week
 - Day(s) of Month
 - Day(s) of Year
 - Day(s) to Skip (1-99 Days)
 - Odd/Even

- Qualifies for Water Conservation Rebates
- EPA WaterSense Approved (Intelligent models only)

COMMUNICATION

- Integrated Cellular Modem
 - GSM Radio
 - CDMA Radio
- Integrated Wi-Fi Modem
- Optional Remote Communication with RF (iWAN)



HOW TO ORDER

8700 -12-I5-USA				
Model	Stations	Program Type	Communication Type	Country Code
8700	08	B = Basic	4 = GSM Radio Only	USA = United States
	12	I = Intelligent	5 = CDMA Radio Only	ISO*
			6 = GSM Radio + RF (iWAN)	
			7 = CDMA + RF (iWAN)	
			10 = Wi-Fi Modem Only	
			12 = Wi-Fi + RF (iWAN)	

*International models - Enter ISO country code ie. Spain = ESP, France = FRA, etc.

ELECTRICAL SPECIFICATIONS

Power Input

USA & Canada: 120VAC, 60Hz

International: 230VAC, 50Hz

Station Output

All Models: 24VAC, 1.0 Amp

Max Load Per Station

All Models: 1.0 Amp

Station Capacity

All Models: Two 24VAC, 6VA Solenoid Valve per Station Plus a Master Valve

DIMENSIONS (H X W X D)

Weather Resistant Cabinet:

9" (22.9 cm) x 12" (30.5 cm) x 5" (12.5 cm)

Enclosure Material: Plastic

Enclosure Type: Outdoor

CERTIFICATIONS

Industry/Testing: UL, cUL, CE, CSA, C-tick, FCC Part 15



Commercial/Municipal

SHARE™ 8700D

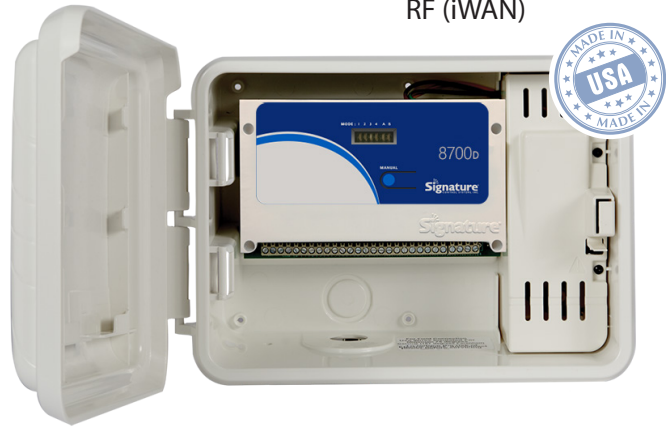
Outdoor, 50, 75, 100, or 125 Station (2-wire Decoder), Integrated Cellular Modem, Web-Based Intelligent Irrigation Controller

FEATURES

- Model Type: Outdoor
- Enclosure Type: Plastic, Wall Mount
- Programming Type: Basic or Intelligent
- Number of Stations: 50, 75, 100, 125
- Number of Programs: 16
- Programmable Events: 64
- Number of Start Times: 4
- Master Valve Pump Starts: 1
- Run Times: 1 Min to 17 Hrs 59 Min
- Integrated Sensor Terminals: 2
- Flexible Scheduling Options:
 - Day(s) of Week
 - Day(s) of Month
 - Day(s) of Year
 - Day(s) to Skip (1-99 Days)
 - Odd/Even
- Qualifies for Water Conservation Rebates
- EPA WaterSense Approved (Intelligent models only)

COMMUNICATION

- Integrated Cellular Modem
 - GSM Radio
 - CDMA Radio
- Integrated Wi-Fi Modem
- Optional Remote Communication with RF (iWAN)



HOW TO ORDER

8700D -050-I5-USA				
Model	Stations	Program Type	Communication Type	Country Code
8700D	050	B = Basic	4 = GSM Radio Only	USA = United States
	075	I = Intelligent	5 = CDMA Radio Only	ISO*
	100		6 = GSM Radio + RF (iWAN)	
	125		7 = CDMA + RF (iWAN)	
			10 = Wi-Fi Modem Only	
			12 = Wi-Fi + RF (iWAN)	

*International models - Enter ISO country code ie. Spain = ESP, France = FRA, etc.



TWO-WIRE
DECODERS
& LATCHING
SOLENOIDS

ELECTRICAL SPECIFICATIONS

Power Input

USA & Canada: 120VAC, 60Hz
International: 230VAC, 50Hz

Station Output

All Models: 24VAC, 1.0 Amp

Max Load Per Station

All Models: 1.0 Amp

Station Capacity

All Models: Two 24VAC, 6VA Solenoid
Valve per Station Plus a Master Valve

DIMENSIONS (H X W X D)

Weather Resistant Cabinet:

9" (22.9 cm) x 12 (30.5 cm) x 5" (12.5 cm)

Enclosure Material: Plastic

Enclosure Type: Outdoor

CERTIFICATIONS

Industry/Testing: UL, cUL, CE, CSA,
C-tick, FCC Part 15



Commercial/Municipal

SHARE™ 8700VM

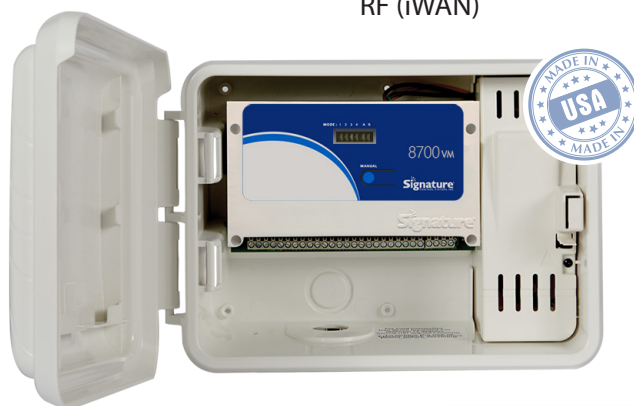
Outdoor, 8 to 48 Station, Retrofit Into Wall Mount or Pedestal Enclosure, Integrated Cellular Modem, Web-Based Intelligent Irrigation Controller

FEATURES

- Model Type: Outdoor
- Enclosure Type: Retrofittable Controller For Installation Into Existing Wall Mount or Pedestal Enclosure
- Programming Type: Basic or Intelligent
- Number of Stations: 8, 16, 24, 32, 40, 48
- Number of Programs: 16
- Programmable Events: 64
- Number of Start Times: 4
- Master Valve Pump Starts: 1
- Run Times: 1 Min to 17 Hrs 59 Min
- Integrated Sensor Terminals: 2
- Flexible Scheduling Options:
 - Day(s) of Week
 - Day(s) of Month
 - Day(s) of Year
- Qualifies for Water Conservation Rebates
- EPA WaterSense Approved (Intelligent models only)

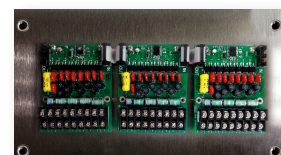
COMMUNICATION

- Integrated Cellular Modem
 - GSM Radio
 - CDMA Radio
- Integrated Wi-Fi Modem
- Optional Remote Communication with RF (iWAN)



HOW TO ORDER

8700VM -16-15-USA				
Model	Stations	Program Type	Communication Type	Country Code
8700VM	08	B = Basic	4 = GSM Radio Only	USA = United States
	16	I = Intelligent	5 = CDMA Radio Only	ISO*
	24		6 = GSM Radio + RF (iWAN)	
	32		7 = CDMA + RF (iWAN)	
	40		10 = Wi-Fi Modem Only	
	48		12 = Wi-Fi + RF (iWAN)	



Optional:
EXPANSION PANEL MOUNT
VALVE MODULES
(8 / 16 STATIONS EACH)

*International models - Enter ISO country code
ie. Spain = ESP, France = FRA, etc.

ELECTRICAL SPECIFICATIONS

Power Input

USA & Canada: 120VAC, 60Hz

International: 230VAC, 50Hz

Station Output

All Models: 24VAC, 1.0 Amp

Max Load Per Station

All Models: 1.0 Amp

Station Capacity:

All Models: Two 24VAC, 6VA Solenoid
Valve per Station Plus a Master Valve

DIMENSIONS (H X W X D)

Weather Resistant Cabinet

9" (22.9 cm) x 12" (30.5 cm) x 5" (12.5 cm)

Enclosure Material: Plastic

Enclosure Type: Outdoor

CERTIFICATIONS

Industry/Testing: UL, cUL, CE, CSA,
C-tick, FCC Part 15



Commercial/Municipal

SHARE™ 8800

Outdoor, 16, 20, or 24 Station, Integrated Cellular Modem, Web-Based Intelligent Irrigation Controller

FEATURES

- Model Type: Outdoor
- Enclosure Type: Plastic, Wall Mount
- Programming Type: Basic or Intelligent
- Number of Stations: 16, 20, 24
- Number of Programs: 16
- Programmable Events: 64
- Number of Start Times: 4
- Master Valve Pump Starts: 1
- Run Times: 1 Min to 17 Hrs 59 Min
- Integrated Sensor Terminals: 1
- Flexible Scheduling Options:
 - Day(s) of Week
 - Day(s) of Month
 - Day(s) of Year
 - Day(s) to Skip (1-99 Days)
 - Odd/Even
- Qualifies for Water Conservation Rebates
- EPA WaterSense Approved (Intelligent models only)

COMMUNICATION

- Integrated Cellular Modem
 - GSM Radio
 - CDMA Radio
- Integrated Wi-Fi Modem
- Optional Remote Communication with RF (iWAN)



HOW TO ORDER

8800 -16-15-USA				
Model	Stations	Program Type	Communication Type	Country Code
8800	16	B = Basic	4 = GSM Radio Only	USA = United States
	20	I = Intelligent	5 = CDMA Radio Only	ISO*
	24		6 = GSM Radio + RF (iWAN)	
			7 = CDMA + RF (iWAN)	
			10 = Wi-Fi Modem Only	
			12 = Wi-Fi + RF (iWAN)	

*International models - Enter ISO country code
ie. Spain = ESP, France = FRA, etc.

ELECTRICAL SPECIFICATIONS

Power Input

USA & Canada: 120VAC, 60Hz
International: 230VAC, 50Hz

Station Output

All Models: 24VAC, 1.0 Amp

Max Load Per Station

All Models: 1.0 Amp

Station Capacity

All Models: Two 24VAC, 6VA Solenoid
Valve per Station Plus a Master Valve

DIMENSIONS (H X W X D)

Weather Resistant Cabinet:

9" (22.9 cm) x 12 (30.5 cm) x 5" (12.5 cm)

Enclosure Material: Plastic

Enclosure Type: Outdoor

CERTIFICATIONS

Industry/Testing: UL, cUL, CE, CSA,
C-tick, FCC Part 15



Commercial/Municipal

SHARE™ GALAXY-RT™ SERIES

Outdoor, 8 to 96 Station (1-250 Zones with 2-Wire Decoders*), Cellular Enabled Web-Based, Intelligent Irrigation Controller for Commercial & Municipal Applications.

FEATURES

- Model Type: Outdoor
- Enclosure Type: Metal Wall Mount;
- Plastic or Stainless Steel Pedestal
- Programming Type: Basic or Intelligent
- Number of Stations:
 - Wall Mount: 8 to 48
 - Pedestal: 8 to 96
 - 2-Wire Decoder: 1 to 250
- Number of Programs: 16
- Programmable Events: 64
- Number of Start Times: 4
- Master Valve Pump Starts: 4
- Run Times: 1 Min to 17 Hrs 59 Min
- Integrated Sensor Terminals: 1

- Flexible Scheduling Options:
 - Day(s) of Week
 - Day(s) of Month
 - Day(s) of Year
 - Day(s) to Skip (1-99 Days)
 - Odd/Even
- Qualifies for Water Conservation Rebates
 - EPA WaterSense Approved (Intelligent models only)

COMMUNICATION

- Integrated Cellular Modem
 - GSM Radio
 - CDMA Radio
- Optional Remote Communication with RF (iWAN)



SMALL WALL MOUNT



LARGE WALL MOUNT



HEAVY-DUTY STAINLESS STEEL PEDESTAL (Front Opening Style)



PLASTIC PEDESTAL



HEAVY-DUTY STAINLESS STEEL PEDESTAL (Top Opening Style)

HOW TO ORDER

GAL - S - LW - Y - 1 - A - P - 048 - X - 4										
Model	Style	Enclosure	Color	Transformer Power	Valve Module Type	Surge Protection	Station Count		Network Communication	Remote Communication
GAL	S	PE	B	1	A	P	0	56	X	4
		LW	G	2	B	S	8	64		5
		SW	Y	3	C		16	72		6
		HF	T		D		24	80		7
					O		32	88		
							40	96		
							48	125		
								250		

Model

GAL = Galaxy RT

Style

S = Signature Control Systems

Enclosure

PE = Plastic Pedestal

LW = Large Wall Mount

SW = Small Wall Mount

HF = Stainless Steel Pedestal (Front Entry)

Color

B = Black (Plastic)

G = Green (Plastic)

Y = Gray (Plastic or Wall Mount)

T = Tan (Wall Mount)

Transformer Power

1 = 110VAC

2 = 220VAC

3 = Solar

Valve Module Type

A = 16 Station (Small Terminals)

B = 8 Station (Large Terminals)

C = 16 Stations (Large Terminals- Pedestal Only)

D = 125 Address Decoder Module

O = None

Surge Protection

P = Premium

S = Standard

Station Count

0, 8, 16, 24, 32, 40, 48, 56, 64, 72, 80, 88, 96,

125 (1 Decoder Modulator) 250 (Dual 125 Decoder Configuration)

Network Communication

X = No Access Point Radio

Remote Communication

4 = GSM Radio Only

5 = CDMA Radio Only

6 = GSM Radio + RF (iWAN)

7 = CDMA + RF (iWAN)

ELECTRICAL SPECIFICATIONS

Power Input

USA & Canada: 120VAC, 60Hz

International: 230VAC, 50Hz

Station Output

All Models: 24VAC, 1.0 Amp

Max Load Per Station

All Models: 1.0 Amp

ELECTRICAL SPECIFICATIONS

Station Capacity

All Models: Fifteen 24VAC, 6VA Solenoid

Valve per Station Plus a Master Valve

CERTIFICATIONS

Industry/Testing: UL, cUL, CE, CSA,
C-tick, FCC Part 15



DIMENSIONS (H X W X D)

Small Wall Mount

13.75" (35 cm) x 15.25" (39 cm) x 5" (12 cm)

Large Wall Mount

18" (46 cm) x 15.25" (39 cm) x 5" (12 cm)

Plastic Pedestal

45" (114 cm) x 16" (41 cm) x 11 5/8" (30 cm)

Stainless Steel Pedestal (Top Load)

39" (99 cm) x 16.5" (42 cm) x 17.25" (42 cm)

Stainless Steel Pedestal (Front Load)

30.25" (75 cm) x 17" (43 cm) x 8.5" (22 cm)

Signature iWAN™ Platform

SHARE™ 8900 Series

Signature's Share™ 8900 Series radio peripherals use ground-breaking technology to convert any DC latching solenoid, normally open/normally closed sensor and Signature low power flow sensor into intelligent wireless devices that integrate seamlessly into Signatures' Share™, web-enabled, intelligent irrigation control platform.

Key Features and Benefits:

Wireless

Eliminates the need to run wires, dig trenches and drill holes through physical barriers, saving time and labor costs.

Web-Enabled

Places remotely located, independently operated, battery powered valves online, where they benefit from the tremendous power of the Signature Share™ platform.

Remote Control

Remote access via a mobile device allows you to operate battery powered valves and sensors from virtually anywhere.

Total System Control

Each 8900 device integrates up to five battery powered valves and wireless sensors into the Share™ platform, including them in "total system" commands as well as other individual-valve and multi-site-wide functions.

Weather-Based

Utilizes the industry's most advanced algorithm and software system to reduce water use by adjusting watering schedules automatically. Saves up to 40% or more water while keeping plants healthy and green (intelligent mode only) giving owners a fast return on investment. Employs real time ET data using nearby weather stations taking the previously unavailable benefits of "Intelligent" irrigation to battery powered valves.

8900 Actuator compatible with 8260, 8360, 8700, 8800 and Galaxy RT



(8900 shown with rubber antenna, valve box antenna optional)

Signature iWAN™

Key Features:

- Based on Share™ Platform
- Connects Share™ Controller Directly to Valve
- Integrated Communications-No Wires
- Standard "AA"-Battery Style [2x]
- Sensor Ready
- "If This, Then That" (IFTTT) Technology Integrated

Communication:

- RF Proprietary Technology
- Program via Signature Share Portal
- Local Control via Signature Share App
- Program Stored in Device

Range:

- Varies based on site conditions and gateway location
- Below ground distance up to 200 yards
- Above ground distance up to ½ mile



Valve box with 8900 ACTUATOR, four battery powered valves and Signature low power flow sensor inside



SIGNATURE SHARE™ ACCESSORIES

SMART SENSOR DEVICES

For use with EZ Pro™ 8700; EZ Pro™ 8700D; EZ Pro™ 8700VM; EZ Pro™ 8800; EZ Pro™ 8755;
Galaxy-RT™ Pedestal; Galaxy-RT™ Wall Mount; Galaxy-RT™ Solar

Model	Description
SSSCM	Smart Sensor Controller Module
SSSD11	Smart Sensor Decoder [Direct Burial]

WEATHER AND SOIL SENSOR DEVICES

For use with EZ Connect™ 8250; EZ Connect™ 8255; EZ Connect™ 8260; EZ Pro™ Jr. 8360; EZ Pro™ 8600;
EZ Pro™ 8700; EZ Pro™ 8700D; EZ Pro™ 8755; Galaxy-RT™ Pedestal; Galaxy-RT™ Wall Mount; Galaxy-RT™ Solar

Model	Description
8501	Rain-Trip Rain Sensor
ACMSWS	Mini-Weather Station
ACSFS	Frost Sensor; Switch Output
ACSMS	Soil Moisture Sensor; Switch Output
ACSTS	Temperature Sensor; Switch Output
ACTRBP	Tipping Rain Bucket Plastic
ACWS	Wind Sensor Trip Switch
ACWS1C	Wind Trip Sensor; Combination (Speed & Direction)

COMMUNICATIONS OPTIONS & MODULES

For use with EZ Connect™ 8255; EZ Connect™ 8260; EZ Pro™ Jr. 8360; EZ Pro™ 8700; EZ Pro™ 8700D;
EZ Pro™ 8755; EZ Pro™ 8800; Galaxy-RT™ Pedestal; Galaxy-RT™ Wall Mount; Galaxy-RT™ Solar

Model	Description
SFDMI	Wi-Fi Data Modem (ISO)
SIGDMI	Indoor GSM Data Module (ISO)
SWAPEI	Wireless AccessPoint External Ant (ISO)
SWAPII	Wireless AccessPoint Integrated Ant (ISO)

For use with the Signature SHARE™ Platform

Model	Description
AGCRT100L	GSM Cellular Modem (ISO)
ACCRT100L	CDMA Cellular Modem (USA)
8920	Signature iWAN™ Platform

FLOW SENSOR

PULSE FLOW SENSOR

The PVC T-Mount flow sensors utilize proven impeller-based technology to accurately monitor and control flow for irrigation systems. The sensor has PVC socket connections to allow for easy installation, while also providing a digital output signal that is directly proportionate to the flow. This output signal is designed to duplicate the electrical characteristics of existing impeller flow sensors, making them compatible with all of Signature's control products.

APPLICATIONS

- Flow sensing applications in PVC piping systems above and below grade
- Flow sensing input to irrigation control systems
- Flow sensing applications for water recycling, water harvesting, or water reclamation applications

FEATURES

- Available in 1", 1-1/2", and 2"
- Can be installed up to 2,000 feet from the controller or other receiving device using a shielded and jacketed, twisted pair communication cable
- Solid-state sensing electronics for improved performance

SPECIFICATIONS

- Flow Range: 0.25 to 15 FPS
- Pressure Rating: 240 PSI Maximum Working Pressure
- Temperature Range: 32°F to 140°F (0° to 60° C)
- Output Signal: Frequency Range 0.3 Hz to 200 Hz



STANDARD TWO-WIRE PULSE; FOR USE ON ALL SIGNATURE SHARE CONTROLLER & SMART SENSOR DEVICE(S)

Model

ACFM100TPVC
ACFM150TPVC
ACFM200TPVC
ACFM1234INS

Description

Flow-Sensor Pulse Output with PVC-Tee Mount - 1"
Flow-Sensor Pulse Output with PVC-Tee Mount - 1-1/2"
Flow-Sensor Pulse Output with PVC-Tee Mount - 2"
Flow-Sensor Pulse Output - Insert only





SIGNATURE CONTROL SYSTEMS, INC.

www.SignatureControlSystems.com

GLOBAL HEADQUARTERS

16485 Laguna Canyon Rd., Suite 130, • Irvine • California • 92618
Tel: 949.580.3640 • Fax: 949.580.3645 • USA Toll Free: 866.4SIGNATURE

©2017-2018 Signature Control Systems, Inc. All rights reserved.

Signature Control Systems, Inc. believes the contents and specifications of its catalog, its website, any and all ads and promotions are correct at the time of printing.

Signature Control Systems, Inc. assume no liability for any errors in listings, specifications, part numbers, prices or model applications. Signature Control Systems, Inc. reserve the right to change specifications, product descriptions, product quality, product offerings, pricing and application at any time without prior written or oral notice. All trademarks, slogans, icons, logos are the property of Signature Control Systems, Inc. or their respective owners, and are used under permission.

Signature Control Systems, Inc. shall not be liable for technical or editorial errors or omissions contained herein; nor for incidental or consequential damages resulting from furnishing this material, or the performance or use of this product.

Signature Control Systems, Inc. reserves the right to change product specifications and performance data without notice. Information in this document may change without notice. Refer to www.SignatureControlSystems.com for the latest product information. No part of this document may be copied, reproduced, or transmitted by any means, for any purpose without prior written permission from Signature Control Systems, Inc.

All other trademarks are the property of Signature Control Systems, Inc.